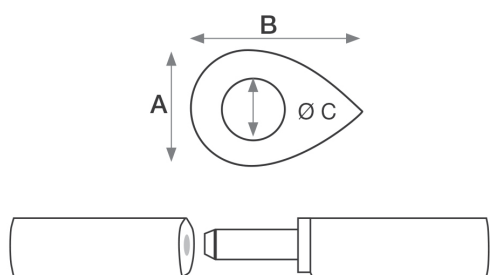


Welding hinges

Our range of welding hinges held in stock include steel hinges, stainless steel hinges, hinges with grease nipples, stainless steel hinges with grease nipples and bearings for welding hinges.



Welding hinges

Code	Size	A x B mm	Max. load 2 hinges	Max. load 3 hinges	C Ø mm
Brass washer					
61104	45 mm	10 x 12,5	60	90	5,5
61106	60 mm	10 x 12,5	60	90	5,5
61108	80 mm	13 x 16	70	105	7
61110	100 mm	16 x 20	80	120	9
Thrust bearing					
61120	120 mm	16 x 20	80	120	9
61140	140 mm	20 x 25	130	200	11
61180	180 mm	23 x 29	190	260	14

With grease nipple

Code	Size	A x B mm	Max. load 2 hinges	Max. load 3 hinges	C Ø mm
Brass washer					
63110	100 mm	16 x 20	80	120	9
Thrust bearing					
63120	120 mm	16 x 20	80	120	9
63140	140 mm	20 x 25	130	200	11
63180	180 mm	23 x 29	190	260	14

Nickel plated thrust bearings

Code	Size
62002	9 mm ball bearing for 120 mm welding hinge
62004	11 mm ball bearing for 140 mm welding hinge
62005	14 mm ball bearing for 180 mm welding hinge

Stainless steel

Code	Size	A x B mm	Max. load 2 hinges	Max. load 3 hinges	C Ø mm
Brass washer					
71104	45 mm	10 x 12	60	90	6
71106	60 mm	10 x 12	60	90	6
71108	80 mm	13 x 16	70	105	7
71110	100 mm	16 x 20	80	120	9
71120	120 mm	16 x 20	80	120	9
71140	140 mm	20 x 25	90	135	11
71180	180 mm	20 x 25	150	225	11

Stainless steel with grease nipple

Code	Size	A x B mm	Max. load 2 hinges	Max. load 3 hinges	C Ø mm
Brass washer					
72060	60 mm	10 x 12,5	60	90	6
72080	80 mm	13 x 16	70	105	7
72110	100 mm	16 x 20	80	120	9
72120	120 mm	16 x 20	80	120	9
72140	140 mm	20 x 25	90	135	11
72180	180 mm	20 x 25	150	225	11

We can also supply other sizes. Please contact our sales department.