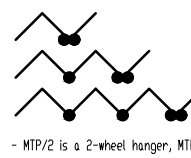


Aseennusvaihto- / Assembly variations



- 1 x MTP/2
- 2 x MTP/2
- 3 x MTP/2
- 4 x MTP/2



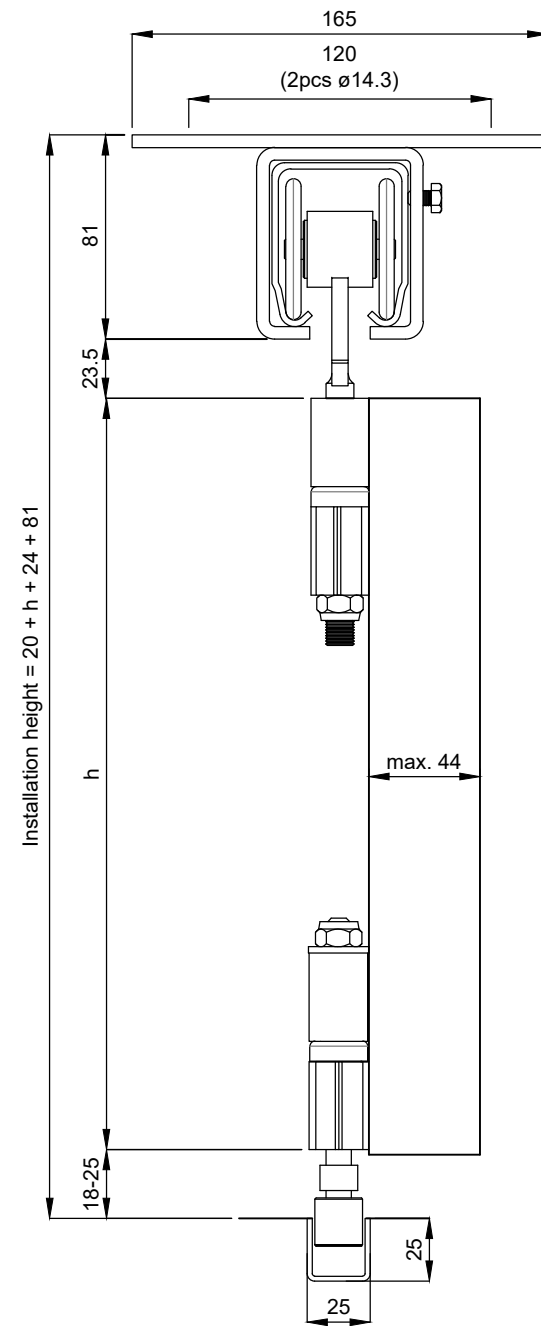
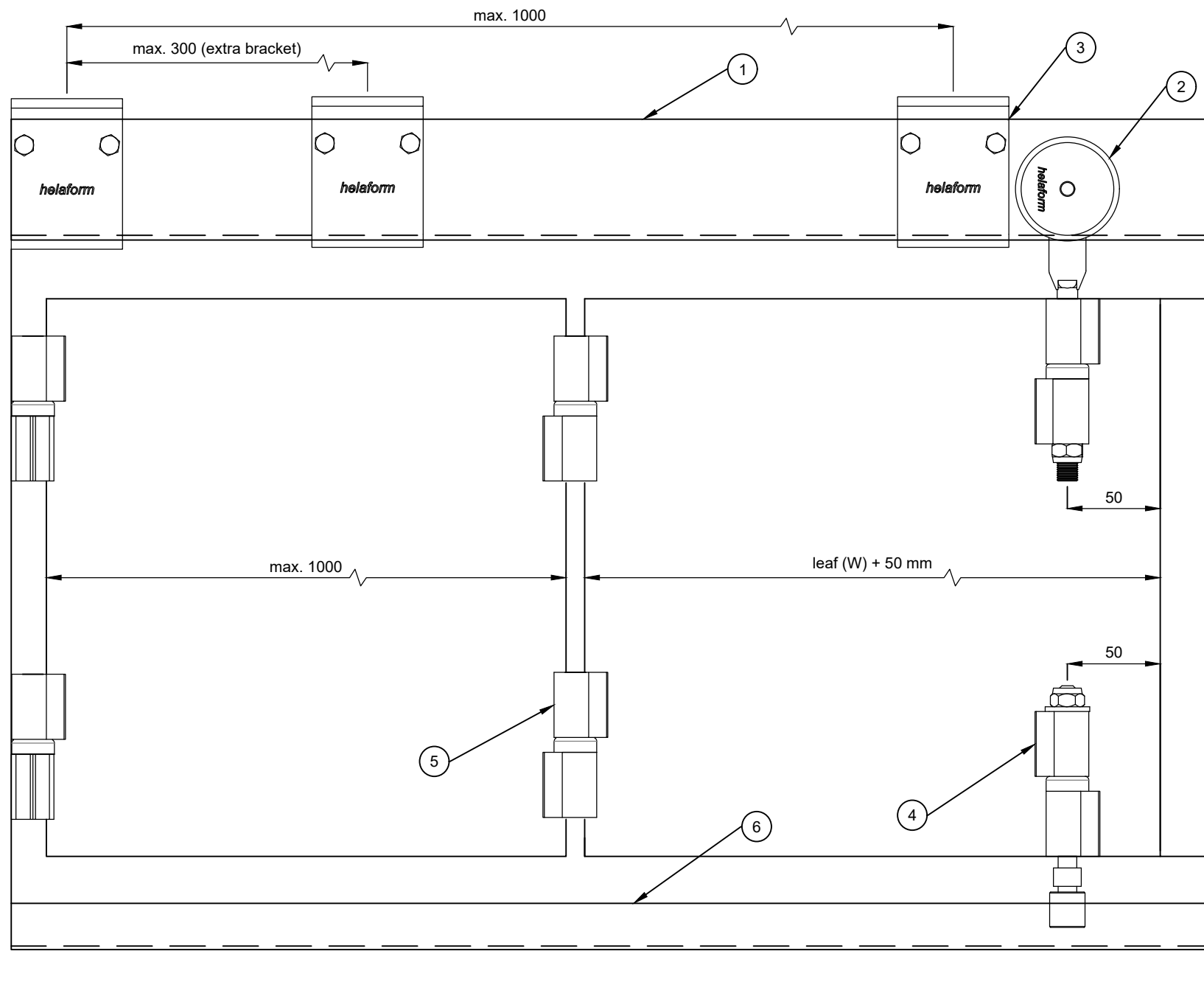
- 1 x MTP/4
- 1 x MTP/2 + 1 x MTP/4
- 2 x MTP/2 + 1 x MTP/4



- MTP/2 is a 2-wheel hanger, MTP/4 is a 4-wheel hanger. Hangers have different max. weight capacities.
- Max. quantity of leaves per side is 8 leaves.

Nimike / Description			Tuotenumero / Product Nr.		Tuotesarja / Product Series		Piirtäjä / By		Mittakaava / Scale		Rev
Series 300/500 (seinä/wall): Taitto-ovijärjestelmä, metallioven pyörästö / Metal folding door system			(assembly S191-0)		Series 300/500		AM		1:3 A3		01
1. Track K-300 / K-500	5. Hinge HS-180	9.	13.	Huomiot / Notes 1. Drawing is for reference only and subject to change without notice. 2. All product dimensions are in millimeter. 3. Door panels (/movable objects) are not in scale.							
2. Hanger MTP/2-300/500/end	6. Bottom guide channel AOK	10.	14.								
3. Bracket SKL-300/500	7. End clip PK-300/500	11.	15.								
4. Bottom guide MTAO-300/500/end	8.	12.	16.								

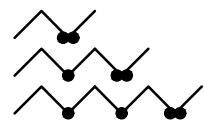




Asennusvaihtoehdot / Assembly variations



1 x MTP/2
2 x MTP/2
3 x MTP/2
4 x MTP/2



1 x MTP/4
1 x MTP/2 + 1 x MTP/4
2 x MTP/2 + 1 x MTP/4



- MTP/2 is a 2-wheel hanger, MTP/4 is a 4-wheel hanger. Hangers have different max. weight capacities.
- Max. quantity of leaves per side is 8 leaves.

Nimike / Description
Series 300/500 (katto/soffit): Taitto-ovijärjestelmä, metallioven pyörästö / Metal folding door system

Tuotenumero / Product Nr.
(assembly K191-0)

Tuotesarja / Product Series
Series 300/500

Piirtäjä / By
AM

Mittakaava / Scale
1:3

A3

Rev
01

1. Track K-300 / K-500	5. Hinge HS-180	9.
2. Hanger MTP/2-300/500/end	6. Bottom guide channel AOK	10.
3. Bracket KKKL-300/500	7.	11.
4. Bottom guide MTAO-300/500/end	8.	12.

9.	13.
10.	14.
11.	15.
12.	16.

13.	14.
14.	15.
15.	16.
16.	

13.	14.
14.	15.
15.	16.
16.	

Huomiot / Notes
1. Drawing is for reference only and subject to change without notice.
2. All product dimensions are in millimeter.
3. Door panels (/movable objects) are not in scale.

helaform