

SKANDI

A modern and decorative sliding track system



COMPLETE FITTINGS SETS

- **Fittings set SKANDI for wooden door (11900/11901)**

A complete set for one wooden door. Also includes Soft closes that bring comfort for sliding door use. Available with 2 and 2.4 meter tracks.

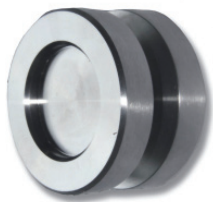


- **Fittings set SKANDI for glass door (11902/11903)**

A complete set for one glass door. Also includes Soft closes that bring comfort for sliding door use. Available with 2 and 2.4 meter tracks.

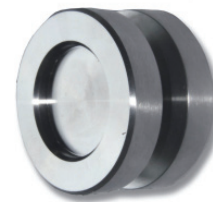


ACCESSORIES



Handle for wooden door (11920)

Round stylish handle for a wooden door. Fits to slide between door and wall. However, the handle has enough depth to get a firm grip on moving the door. Suitable for doors with a thickness of 35-45 mm.



Handle for glass door (11921)

Round stylish handle for a glassdoor. Fits to slide between door and wall. However, the handle has enough depth to get a firm grip on moving the door. There is no need to drill holes in the glass door, as the handle attaches to the glass surface with a strong 3M sticker.



Track joint (11990)

Allows you to seamlessly connect / extend the track as you like and, for example, connect two sets of fittings sets. This method is used e.g. when the double doors of a large door opening are desired to run on the same track and open completely out from the front of the door opening to the sides.

The door also slides over the connector if necessary.